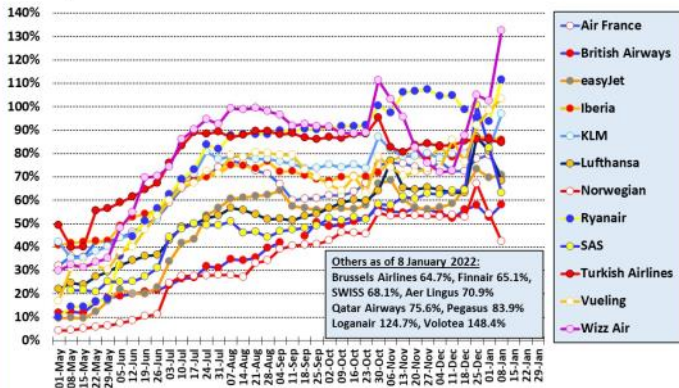


### Major European airlines in 2021/22

Percent of flights versus same period in 2019 - weekly moving average

Source: Analysis of Eurocontrol data



ANKER REPORT

### European capacity in 2022

Planned monthly seat capacity as % of 2019 figure by date

Source: Cirium Data and Analytics



ANKER REPORT

### New European Routes Database (NERD)

Start Date	Airline	From	DC	DA	To	AC	AA	WF	A/c	km	Competition
03-Jan-22	easyJet	Barcelona	es	BCN	Milan Linate	it	LIN	4	A320	744	-
03-Jan-22	Turkish Airlines	Istanbul	tr	IST	Cebu (via Manila)	ph	CEB	3	A359	9696	-
04-Jan-22	Air Serbia	Nis	rs	INI	Istanbul	tr	IST	2	A325	613	-
04-Jan-22	Saudia	Jeddah	sa	JED	Amsterdam	nl	AMS	2	B789	4497	-
04-Jan-22	Turkish Airlines	Trabzon	tr	TZX	Van	tr	VAN	2	B738	415	-
05-Jan-22	Air Serbia	Kraljevo	rs	KVO	Istanbul	tr	IST	2	ATR7	727	-
05-Jan-22	Amelia	Paris Orly	fr	ORY	Brive	fr	BVE	11	ER4	404	-
06-Jan-22	Air Serbia	Belgrade	rs	BEG	Nis	rs	INI	4	EQV	206	-
06-Jan-22	Air Serbia	Nis	rs	INI	Cologne Bonn	de	CGN	2	A325	1392	-
08-Jan-22	Jet2.com	Glasgow	gb	GLA	Geneva	ch	GVA	1	B738	1299	U2 (3)
08-Jan-22	Pegasus Airlines	Gaziantep	tr	GZT	Trabzon	tr	TZX	2	B738	492	-
08-Jan-22	Transavia France	Paris Orly	fr	ORY	Ivalo	fi	IVL	1	B738	2607	-

### European airport passenger statistics

During the last week the following airports have revealed traffic statistics for December 2021. The percentage figure shown is traffic compared with December 2019.

- Croatia: Dubrovnik (-66%), Split (-41%), Zagreb (-22%)
- Denmark: Aalborg (-14%), Billund (-37%)
- Estonia: Tallinn (-29%)
- France: Montpellier (-19%)
- Germany: Hamburg (-57%)
- Greece: Athens (-32%, domestic -13%, international -40%)
- Hungary: Budapest (-47%)
- Ireland: Knock (-51%)
- Netherlands: Eindhoven (-31%)
- Ukraine: Kiev KBP (-33%)

