



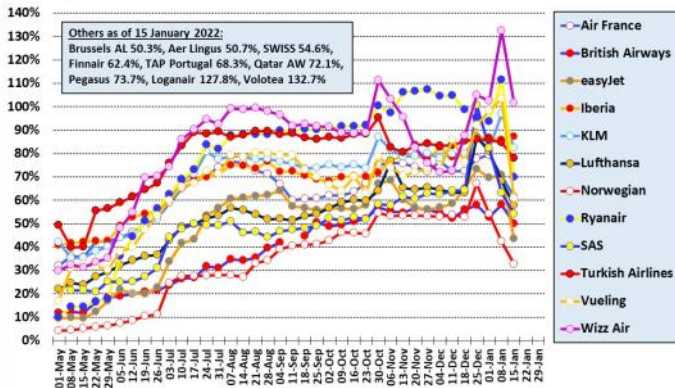
**AIR SERVICE ONE**  
NEWS - DATA - ANALYSIS

# Last week in Europe

10 January 2022 - 16 January 2022

## Major European airlines in 2021/22 (to 15 Jan 22)

Percent of flights versus same period in 2019 - weekly moving average  
Source: Analysis of Eurocontrol data



## European capacity in 2022

Planned monthly seat capacity as % of 2019 figure by date  
Source: Cirium Data and Analytics



## New European Routes Database (NERD)

Start Date	Airline	From	DC	DA	To	AC	AA	WF	A/c	km	Competition
10-Jan-22	Wizz Air	Naples	it	NAP	Venice Marco Polo	it	VCE	7	A32S	536	FR (14)
15-Jan-22	Eurowings	Salzburg	at	SZG	Copenhagen	dk	CPH	1	A320	871	D8 (3), SK (2)
15-Jan-22	Icelandair	Reykjavik	is	KEF	Salzburg	at	SZG	1	B75S	2803	OG (1) from 22/1
15-Jan-22	Wizz Air	Vienna	at	VIE	Sharm El Sheikh	eg	SSH	1	A32S	2713	-

## European airport passenger statistics

During the last week the following airports have revealed traffic statistics for December 2021. The percentage figure shown is traffic compared with December 2019.

- Austria:** Innsbruck (-67%)
- Belgium:** Brussels BRU (-50%), Brussels CRL (-29%)
- Bosnia & Herzegovina:** Banja Luka (+35%), Sarajevo (+22%), Tuzla (-39%)
- Cyprus:** all airports (-34%), Larnaca (-40%), Paphos (-19%)
- Denmark:** Copenhagen (-47%)
- France:** Strasbourg (-22%)
- Germany:** Munich (-57%)
- Iceland:** Reykjavik (-43%)
- Ireland:** Cork (-55%), Dublin (-48%)
- Italy:** Rome CIA (-53%), Rome FCO (-55%)
- Netherlands:** Amsterdam (-47%)
- Norway:** all airports (-36%), Bergen (-25%), Oslo OSL (-43%), Stavanger (-39%), Tromso (-16%), Trondheim (-25%)
- Poland:** Poznan (-30%), Rzeszow (-43%), Wroclaw (-41%)
- Portugal:** all airports (-32%), Faro (-41%), Funchal (-15%), Lisbon (-35%), Ponta Delgada (-11%), Porto (-32%)
- Spain:** all airports (-30%), Alicante (-36%), Barcelona (-39%), Bilbao (-31%), Fuerteventura (-13%), Gran Canaria (-19%), Ibiza (-8%), Lanzarote (-20%), Madrid (-37%), Malaga (-28%), Palma de Mallorca (-22%), Santiago de Compostela (-14%), Seville (-26%), Tenerife TFN (-18%), Tenerife TFS (-23%), Valencia (-23%)
- Sweden:** all airports (-47%), Gothenburg (-48%), Lulea (-33%), Malmo (-41%), Stockholm ARN (-43%), Stockholm BMA (-58%), Stockholm NYO (-79%), Umea (-41%)
- Switzerland:** Zurich (-55%)
- Turkey:** all airports (-25%), Adana (-24%), Ankara (-34%), Antalya (-23%), Bodrum (-8%), Dalaman (+2%), Istanbul IST (-26%), Istanbul SAW (-23%), Izmir (-28%)

**UK:** London LHR (-53%)

**Ukraine:** Kiev IEV (-14%), Lviv (-7%)

## New route announcements

**BA CityFlyer:** Will add new routes this summer from London LCY to Barcelona (6-weekly), Luxembourg (up to 3-daily), Milan MXP (daily, replacing Milan LIN) and Thessaloniki (weekly).

**Emerald Airlines:** The Irish start-up, which has yet to launch operations from its first base in Dublin, has already announced plans to open a second base at Belfast BHD later this year and offer six domestic routes; to Birmingham, Edinburgh, Exeter, Glasgow GLA, Leeds Bradford and Manchester.

**Eurowings:** Is adding three more routes to its upcoming new Stockholm ARN base with flights to Cologne Bonn, Rhodes and Heraklion starting at the end of May or early June.

**Icelandair:** Will add new routes this summer from Reykjavik to Alicante, Nice and Rome FCO, all operating 2-weekly.

**Transavia:** Announced three new routes from Paris ORY to Moscow VKO (2-weekly), Pau (12-weekly) and Perpignan (14-weekly), and new route from Montpellier to Rome FCO (2-weekly).

**Volotea:** Announced six new seasonal routes from France starting in May/June; Bordeaux-Athens, Lille-Cagliari, Lyon-Menorca, Nantes-Athens, Nantes-Zakynthos and Nice-Cagliari.

**Wizz Air:** Will connect Budapest and Chisinau 2-weekly from 28 March.

## European airline passenger statistics

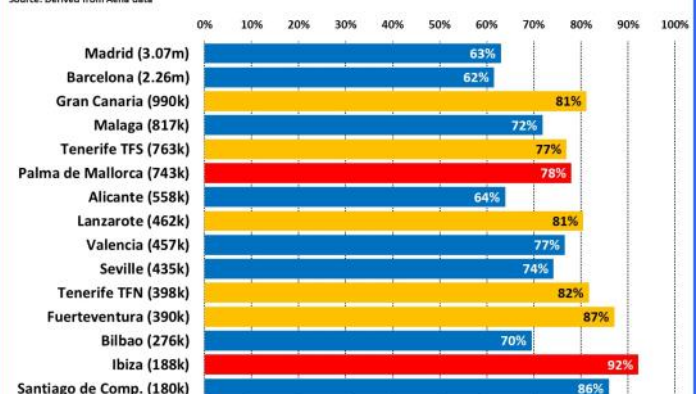
**Icelandair:** Carried 168,581 passengers on all flights in December at a load factor of 71.2%. For 2021, carried 1.461 million passengers in total on all flights at a load factor of 65.3%.

**SAS:** Carried 977,000 passengers on scheduled flights in December at a load factor of 56.3%.

**Smartwings:** In 2021, Smartwings carried 2.530 million passengers, of which 1.238 million were on scheduled flights and 1.292 million on charter flights.

## Top 15 Spanish airports in December 2021

Dec 2021 pax as percentage of Dec 2019 pax (pax in Dec 2021)  
Source: Derived from Aena data



Monday 10 January 2022 - Sunday 16 January 2022