



AIR SERVICE ONE
NEWS - DATA - ANALYSIS

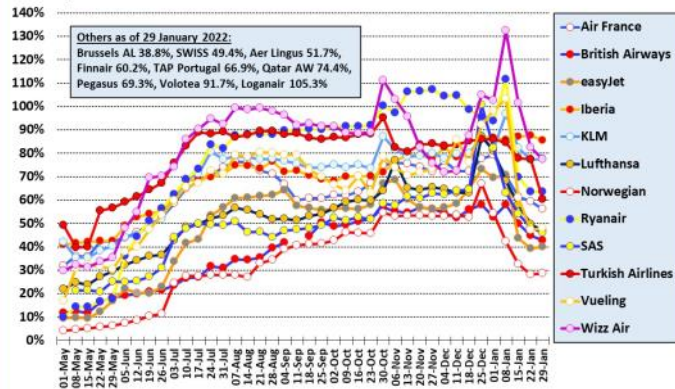
Last week in Europe

24 January 2022 - 30 January 2022

Major European airlines in 2021/22 (to 29 Jan 22)

Percent of flights versus same period in 2019 - weekly moving average

Source: Analysis of Eurocontrol data



ANKER REPORT

European capacity in 2022

Planned monthly seat capacity as % of 2019 figure by date

Source: Cirium Data and Analytics



ANKER REPORT

New European Routes Database (NERD)

Start Date	Airline	From	DC	DA	To	AC	AA	WF	A/c	km	Competition
27-Jan-22	AnadoluJet	Gaziantep	tr	GZT	Erbil	iq	EBL	2	B738	586	-
29-Jan-22	Transavia France	Lyon	fr	LYS	Stockholm Arlanda	se	ARN	1	B738	1770	-

European airport passenger statistics

During the last week the following airports have revealed traffic statistics for December 2021. The percentage figure shown is traffic compared with December 2019.

- Albania:** Tirana (+0%)
- Austria:** Linz (-84%), Salzburg (-70%)
- Belarus:** Minsk (-58%)
- Bulgaria:** Sofia (-39%)
- Czech Republic:** Prague (-63%)
- Denmark:** Aarhus (-34%)
- France:** Ajaccio (+46), Bastia (-13%), Biarritz (-21%), Bordeaux (-43%), Caen (+37.2%), Calvi (+8%), Chambéry (-84%), Lille (-17%), Lyon (-40%), Marseille (-35%), Nantes (-33%), Nice (-26%), Paris BVA (-13%), Pau (-34%), Toulouse (-36%)
- Germany:** Berlin (-60%), Bremen (-62%), Cologne Bonn (-53%), Düsseldorf (-59%), Frankfurt HHN (-24%), Friedrichshafen (-59%), Hannover (-57%), Memmingen (-14%), Münster/Osnabrück (-62%), Nuremberg (-68%), Stuttgart (-64%)
- Ireland:** Shannon (-48%)
- Italy:** Ancona (-22%), Milan BGY (-27%), Milan LIN (-30%), Milan MXP (-43%), Naples (-24%), Olbia (-18%), Palermo (-6%), Perugia (-16%), Trapani (+73%), Trieste (-25%), Turin (-14%), Venice TSF (-33%), Venice VCE (-47%), Verona (-29%)
- Kosovo:** Pristina (+12%)
- Luxembourg:** Luxembourg (-33%)
- Moldova:** Chisinau (-19%)
- Montenegro:** Tivat (-58%)
- North Macedonia:** Ohrid (-42%), Skopje (-30%)
- Poland:** Krakow (-40%), Lodz (-47%), Lublin (-54%), Warsaw WAW (-47%)
- Romania:** Bucharest (-39%), Cluj-Napoca (-36%), Timisoara (-59%)
- Russia:** Moscow DME (-10%), Moscow SVO (-26%), Moscow VKO (-17%)
- Switzerland:** Basel (-44%), Geneva (-54%)
- UK:** Aberdeen (-45%), Belfast BFS (-30%), Exeter (-75%), Glasgow (-50%), Guernsey (-48%), Isle Of Man (-47%), Leeds Bradford (-60%), London LTN (-57%), Newcastle (-53%), Norwich (-56%), Southampton (-74%)
- Ukraine:** Kharkiv (-20%), Odessa (-10%)

New route announcements

Air Serbia: Announced six further new routes from Belgrade, all starting in June. Amman (4-weekly), Hannover (3-weekly), Lyon (2-weekly), Nuremberg (2-weekly) and Salzburg (3-weekly) are already on sale while Sochi service (2-



weekly) is still awaiting the necessary authorisations. In the last two weeks Air Serbia has announced a total of nine new international routes from the Serbian capital.

flynas: Announced via LinkedIn that it would begin flights from Riyadh to Mykonos and Santorini this summer. No further details at this stage.

Norwegian: Plans to launch new routes this summer from Stavanger to Paris CDG, as well as Trondheim to Berlin, Copenhagen and Manchester.

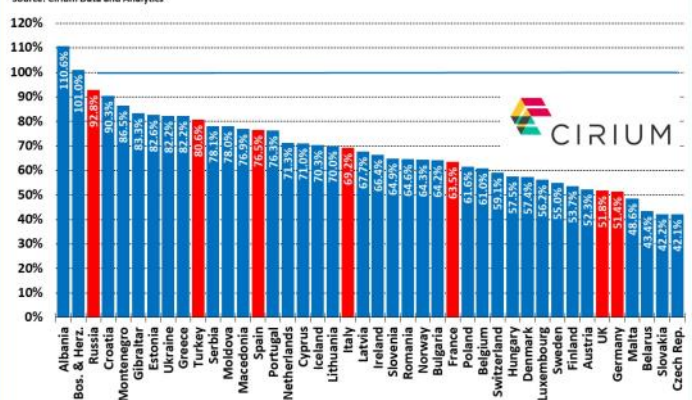
Volotea: Will add new several new routes this summer; from Deauville in France to both Olbia and Palermo, from Toulouse to Faro, from Luxembourg to Ajaccio and from Naples to Pantelleria.

Wizz Air: Revealed that it would add new routes from Gatwick to Bourgas and Varna in Bulgaria as well as Venice VCE and Palermo in Italy this summer. This brings to 26 the number of destinations the airline shows as being bookable from Gatwick on its website.

European airline capacity for January 2022

Planned Jan 2022 seat capacity as a percentage of Jan 2020 seat capacity

Source: Cirium Data and Analytics



ANKER REPORT