



AIR SERVICE ONE  
NEWS - DATA - ANALYSIS

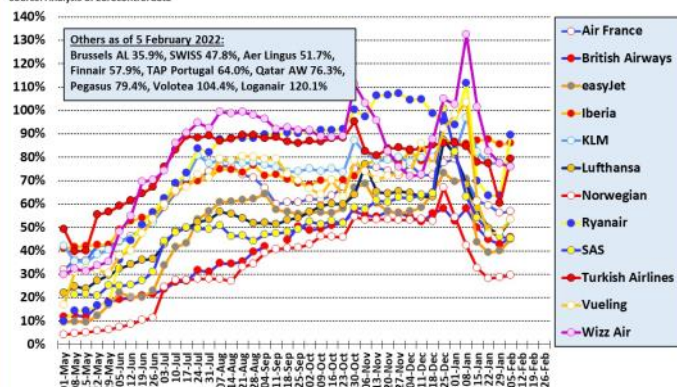
# Last week in Europe

31 January 2022 - 6 February 2022

## Major European airlines in 2021/22 (to 05 Feb 22)

Percent of flights versus same period in 2019 - weekly moving average

Source: Analysis of Eurocontrol data



## European capacity in 2022

Planned monthly seat capacity as % of 2019 figure by date

Source: Cirium Data and Analytics



## New European Routes Database (NERD)

Start Date	Airline	From	DC	DA	To	AC	AA	WF	A/c	km	Competition
29-Jan-22	Transavia France	Lyon	fr	LYS	Stockholm Arlanda	se	ARN	1	B738	1770	-
02-Feb-22	FlyOne Armenia	Yerevan	am	EVN	Istanbul	tr	IST	2	A320	1328	-
02-Feb-22	Pegasus Airlines	Istanbul Sabiha Gokcen	tr	SAW	Yerevan	am	EVN	3	A320	1279	-
02-Feb-22	Wizz Air	Rome Fiumicino	it	FCO	Bucharest	ro	OTP	5	A325	1167	RO (3)
03-Feb-22	Flyr	Oslo	no	OSL	Geneva	ch	GVA	3	B738	1588	DY (3), SK (3)
04-Feb-22	BA CityFlyer	London City	gb	LCY	Salzburg	at	SZG	2	E190	1020	-
04-Feb-22	Wizz Air	Krakow	pl	KRK	Dubai	ae	DXB	2	A321	4110	FZ (4)
04-Feb-22	Wizz Air	Vienna	at	VIE	Dubai	ae	DXB	3	A321	4226	EK (9)
05-Feb-22	BA CityFlyer	London City	gb	LCY	Chambery	fr	CMF	2	E190	781	-
05-Feb-22	BA CityFlyer	Southampton	gb	SOU	Chambery	fr	CMF	2	E190	797	-
05-Feb-22	Flyr	Oslo	no	OSL	Salzburg	at	SZG	2	B738	1387	DY (2)
06-Feb-22	Vueling	Paris Orly	fr	ORY	La Palma	es	SPC	1	A325	2818	-

## European airport passenger statistics

During the last week the following airports have revealed traffic statistics for December 2021. The percentage figure shown is traffic compared with December 2019.

**Georgia:** Batumi (-2%), Tbilisi (-14%)

**Germany:** all airports (-53%), Dortmund (-33%), Dresden (-82%), Karlsruhe/Baden-Baden (-24%), Leipzig (-68%), Weeze (-34%)

**Netherlands:** all airports (-46%), Groningen (-50%), Maastricht (-80%), Rotterdam (-56%)

**Poland:** Gdansk (-42%), Katowice (-41%)

**Russia:** Anapa (+41%), Astrakhan (+31%), Ekaterinburg (+0%), Kaliningrad (+42%), Krasnodar (+19%), Makhachkala (+47%), Nizhny Novgorod (+54%), Rostov-on-Don (+2%), Samara (+8%), Sochi/Adler (+50%), Ufa (+13%), Volgograd (+38%)

**UK:** all airports (-57%), Belfast BHD (-42%), Birmingham (-58%), Bournemouth (-56%), Bristol (-54%), Cardiff (-80%), City of Derry (-38%), Doncaster/Sheffield (-47%), Edinburgh (-58%), Glasgow PIK (-67%), Inverness (-38%), Jersey (-38%), Liverpool (-57%), London LCY (-76%), Newquay (-80%), Teesside (-47%)

## New route announcements

**Air France:** From 9 July will operate daily service between Nice and London LHR. Service ends on 28 August. Will compete directly with BA.

**Blue Air:** Has announced it will serve Funchal 2-weekly from Bucharest OTP from 9 April.

**British Airways:** Nuremberg will be a new route from London LHR this summer with flights operating between 5-weekly and daily.

**easyJet:** Revealed several new routes last week including London LGW to Rijeka in Croatia, Cologne Bonn to Porto, Paris CDG to Bari (a service resumption after several years) and three routes to Greece from Naples.

**KLM:** Announced pre-pandemic, the carrier will finally launch 3-weekly service to Austin in Texas from Amsterdam on 28 March using A330s.

**PLAY:** Announced New York SWF as its third US destination (after Baltimore/Washington and Boston) with daily service starting on 9 June.

**Ryanair:** Will base a third aircraft at Cagliari this summer and start new routes to Carcassonne, Nuremberg, Palma de Mallorca and Poznan. In total it will now serve 38 destinations from the Sardinian airport in S22.

**SAS:** Will open a base in Bergen this summer using the SAS Link brand and use Embraer E195s to match capacity more closely with demand. The airline already operates multiple routes from the airport and so far no new routes have been announced.

**Sky Express:** Has announced 2-weekly service starting 4 June between Heraklion and Marseille.

**SunExpress:** Will operate a weekly service between Budapest and Izmir from 18 June.

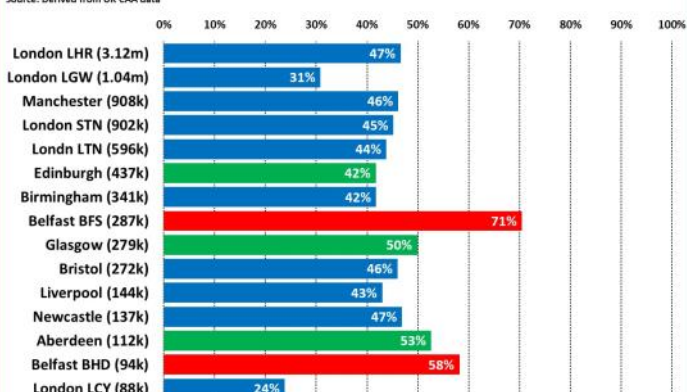
**Transavia:** A new route between Amsterdam and Riga will commence on 31 March and operate 3-weekly.

**Wizz Air:** The airline has announced six new routes from Albania starting this summer. Tirana will now be connected to Friedrichshafen and Rimini from April, while the new Kukes Airport in Albania is a new addition to Wizz Air's network and will see the launch of flights to Basel-Mulhouse, Karlsruhe/Baden-Baden, Memmingen and Vienna starting in early June.

## Top 15 UK airports in December 2021

Dec 2021 pax as percentage of Dec 2019 pax (pax in Dec 2021)

Source: Derived from UK CAA data



Monday 31 January 2022 - Sunday 6 February 2022