



**AIR SERVICE ONE**  
NEWS - DATA - ANALYSIS

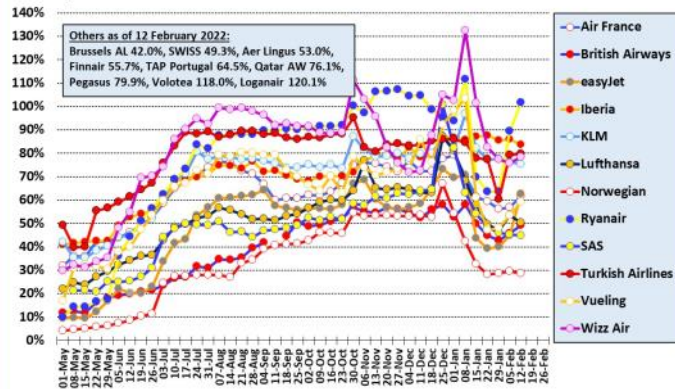
# Last week in Europe

7 February 2022 - 13 February 2022

## Major European airlines in 2021/22 (to 12 Feb 22)

Percent of flights versus same period in 2019 - weekly moving average

Source: Analysis of Eurocontrol data

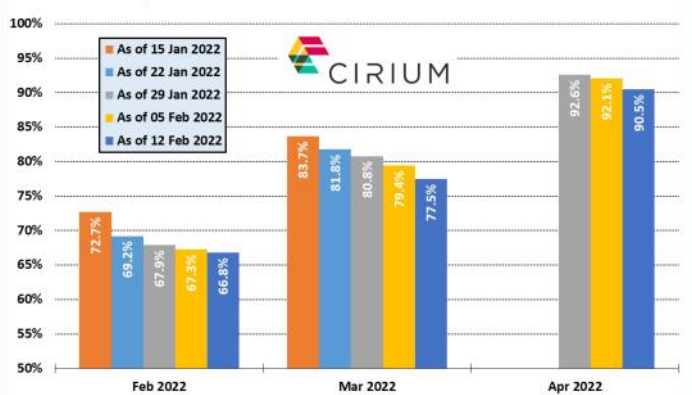


**ANKER REPORT**

## European capacity in 2022

Planned monthly seat capacity as % of 2019 figure by date

Source: Cirium Data and Analytics



**ANKER REPORT**

## New European Routes Database (NERD)

Start Date	Airline	From	DC	DA	To	AC	AA	WF	A/c	km	Competition
07-Feb-22	Wizz Air Abu Dhabi	Abu Dhabi	ae	AUH	Krasnodar	ru	KRR	2	A321	2680	-
07-Feb-22	Wizz Air Abu Dhabi	Abu Dhabi	ae	AUH	Yerevan	am	EVN	2	A321	1989	-
10-Feb-22	Icelandair	Reykjavik	is	KEF	Alicante	es	ALC	1	B752	3211	OG (1)
10-Feb-22	Wizz Air	Belgrade	rs	BEG	Barcelona	es	BCN	2	A325	1532	JU (2)
11-Feb-22	Aeroflot	St. Petersburg	ru	LED	Kirovsk/Apatity	ru	KVK	5	SU9	882	D2 (7)
11-Feb-22	Transavia France	Lyon	fr	LYS	Budapest	hu	BUD	2	B738	1102	-
12-Feb-22	Jet2.com	Newcastle	gb	NCL	Salzburg	at	SZG	1	B738	1297	TOM (1)
12-Feb-22	Royal Air Maroc	Tangier	ma	TNG	Istanbul	tr	IST	1	B738	3064	-
12-Feb-22	Transavia France	Lyon	fr	LYS	Sfax	tn	SFA	1	B738	1312	-
12-Feb-22	Wizz Air	Bari	it	BRI	Dubai	ae	DXB	1	A325	3962	-

## European airport passenger statistics

During the last week the following airports have revealed traffic statistics for January 2022. The percentage figure shown is traffic compared with pre-pandemic January 2019.

- Austria:** Innsbruck (-51%)
- Belgium:** Antwerp (-21%), Brussels CRL (-41%), Ostend (-14%)
- Bosnia & Herzegovina:** Sarajevo (+6%)
- Bulgaria:** Bourgas (+0%), Varna (-17%)
- Croatia:** Dubrovnik (-65%), Split (-44%), Zagreb (-27%)
- Cyprus:** Larnaca (-50%), Paphos (-38%)
- Denmark:** Aalborg (-44%), Aarhus (-59%), Billund (-53%), Copenhagen (-58%)
- Estonia:** Tallinn (-35%)
- Finland:** all airports (-59%), Helsinki (-61%), Ivalo (-27%), Kittila (+6%), Kuusamo (+10%), Oulu (-70%), Rovaniemi (-32%)
- France:** Montpellier (-42%), Strasbourg (-61%)
- Georgia:** Batumi (+43%), Tbilisi (-34%)
- Germany:** Frankfurt (-53%), Munich (-63%)
- Greece:** Athens (-45%), Chania (-31%), Corfu (-31%), Kos (-31%), Mytilene (-32%), Rhodes (-30%), Santorini (-58%), Thessaloniki (-43%)
- Hungary:** Budapest (-44%)
- Iceland:** Reykjavik KEF (-64%), Reykjavik RKV (-37%)
- Ireland:** Cork (-56%), Dublin (-52%)
- Latvia:** Riga (-47%)
- Lithuania:** all airports (-44%), Kaunas (-32%), Palanga (-56%), Vilnius (-45%)
- Netherlands:** Eindhoven (-31%)
- Norway:** Bergen (-37%), Bodø (-39%), Oslo OSL (-57%), Stavanger (-52%), Tromsø (-34%), Trondheim (-48%)
- Poland:** Gdansk (-42%), Katowice (-40%), Krakow (-37%), Wroclaw (-51%)
- Russia:** St. Petersburg (+11%)
- Slovenia:** Ljubljana (-64%)
- Spain:** all airports (-37%), Alicante (-40%), Barcelona (-48%), Bilbao (-45%), Fuerteventura (-26%), Gran Canaria (-28%), Ibiza (-17%), Lanzarote (-29%),

Madrid (-39%), Malaga (-31%), Palma de Mallorca (-33%), Santiago de Compostela (-27%), Seville (-39%), Tenerife TFN (-21%), Tenerife TFS (-30%), Valencia (-38%)

**Sweden:** Gothenburg (-62%), Lulea (-52%), Malmö (-60%), Stockholm ARN (-59%), Stockholm BMA (-78%), Umea (-63%)

**Switzerland:** Geneva (-52%), Zurich (-58%)

**Turkey:** all airports (-34%), Adana (-38%), Ankara (-51%), Antalya (-26%), Bodrum (-28%), Dalaman (+1%), Diyarbakir (-31%), Erzurum (-17%), Gaziantep (-34%), Hatay (-35%), Istanbul IST (-33%), Istanbul SAW (-27%), Izmir (-43%), Kayseri (-28%), Samsun Carsamba (-32%), Trabzon (-38%), Van (-20%)

**UK:** East Midlands (-73%), London LHR (-56%), London STN (-66%), Manchester (-58%)

**Ukraine:** all airports (-18%), Odessa (+8%)

## New route announcements

**Eurowings Discover:** Will launch a 3-weekly service from Frankfurt FRA to Kruger Mpumalanga Airport in South Africa from 15 November. The service will operate via Windhoek in Namibia in both directions.

**Flyr:** Has announced five new routes from Oslo to Billund, Edinburgh, Pisa, Prague and Stockholm ARN. The Pisa route will start in May, while the other four routes are set to begin in early April.

**Loganair:** Plans to connect Aberdeen and Oslo with 6-weekly non-stop service starting in mid-June. This will be Loganair's third international route from Aberdeen. It already serves Dublin in Ireland and Esbjerg in Denmark.

**SAS:** Is expanding its long-haul offering this summer with the addition of non-stop service from both Copenhagen and Stockholm ARN to Toronto. Service is set to start in June and will utilise the airline's new A321LR aircraft. The Copenhagen route will operate 3-weekly, while the Stockholm service is planned as 4-weekly. Competition on the Copenhagen route will come from fellow Star Alliance member Air Canada. SAS's other main Scandinavian hub in Oslo does not currently have non-stop service to Toronto, or anywhere else in Canada.

**Volotea:** Will begin connecting Bordeaux and Florence with 2-weekly service from 27 May. This is currently the airline's only route to the Italian airport. According to Cirium data, Volotea previously served Florence in 2013 and 2014 from Bordeaux, Catania, Nantes and Palermo.