



AIR SERVICE ONE
NEWS - DATA - ANALYSIS

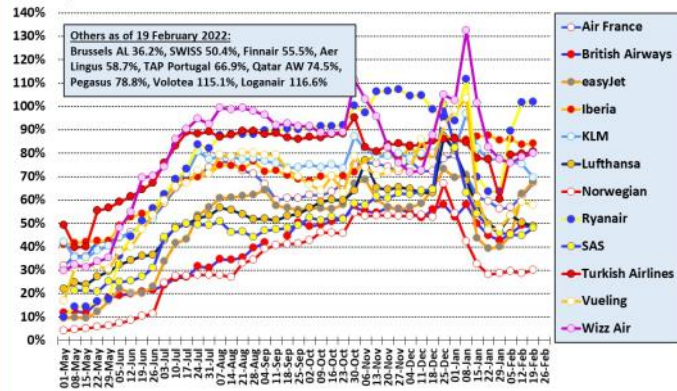
Last week in Europe

14 February 2022 - 20 February 2022

Major European airlines in 2021/22 (to 19 Feb 22)

Percent of flights versus same period in 2019 - weekly moving average

Source: Analysis of Eurocontrol data



European capacity in 2022

Planned monthly seat capacity as % of 2019 figure by date

Source: Cirium Data and Analytics



New European Routes Database (NERD)

Start Date	Airline	From	DC	DA	To	AC	AA	WF	A/c	km	Competition
16-Feb-22	Flyr	Oslo	no	OSL	Milan Bergamo	it	BGY	2	B738	1619	.
19-Feb-22	Flyr	Trondheim	no	TRD	Alicante	es	ALC	1	B738	2905	DY (1)



Ukraine: Kharkiv (+2%), Kiev IEV (-24%), Kiev KBP (-25%), Lviv (+10%)

New route announcements

airBaltic: Will add Batumi in Georgia to its Riga network this summer with the launch of 2-weekly service from 2 May. Flights will depart Riga just before midnight on Mondays and Fridays, with the return flight getting back to Riga at just before 07:00 on Tuesdays and Saturdays. airBaltic already serves the Georgian capital Tbilisi with up to 5-weekly flights this summer.



easyJet: Has announced it is expanding its network from Porto this summer. It will add new non-stop service to Cologne Bonn (2-weekly from 1 April), Madrid (5-weekly from 3 April) and Porto Santo, though the latter is not yet bookable.

flynas: Will launch 3-weekly flights between Riyadh and Prague from 1 May.

Flyr: Will serve Alicante, Malaga and Nice non-stop from Bergen and Stavanger. Also Zadar from Bergen and Palma de Mallorca from Stavanger.

Iberia: Is adding new non-stop service from Madrid to both Dallas/Fort Worth and Washington IAD. Both will operate 4-weekly from 1 June.

ITA Airways: Will start daily service between Milan LIN and Hamburg from 27 March.

Ryanair: Is starting new routes this summer from Edinburgh to Bari, Marrakech, Nimes and Santiago de Compostela, and three new routes from Leeds Bradford to Paris BVA, Reus and Zadar.

Transavia: Is adding four new routes starting this summer; Brest-Porto, Marseille-Tunis, Marseille-Monastir and Nice-Monastir.

Volotea: Announced that Lille would become its seventh base in France this summer. Five new routes will be launched but the destinations have not yet been revealed. At present the airline offers 10 routes from Lille.

Airline traffic statistics for January 2022: pax (load factor)

Aeroflot: 1.7m

airBaltic: 147k

Finnair: 451.3k (45.1%)

Norwegian: 637k (69.7%)

Ryanair: 7.0m (79%)

SAS: 758k (49.0%)

Turkish Airlines: 3.9m (65.9%)

Wizz Air: 2.40m (79.6%)

NB: Air France KLM Group, IAG and Lufthansa Group only report traffic statistics these days on a quarterly basis.

European airport passenger statistics

During the last week the following airports have revealed traffic statistics for January 2022. The percentage figure shown is traffic compared with pre-pandemic January 2019.

Austria: Vienna (-55%)

Bosnia & Herzegovina: Banja Luka (+23%)

France: Brest (-43%), Paris CDG (-49%), Paris ORY (-44%), Pau (-54%)

Czech Republic: Prague (-65%)

Georgia: Kutaisi (-30%)

Germany: Berlin (-68%), Hamburg (-63%)

Gibraltar: Gibraltar (-42%)

Malta: Malta (-57%)

Netherlands: Amsterdam (-50%)

Poland: Lublin (-65%), Poznan (-41%), Warsaw WAW (-46%)

Portugal: all airports (-39%), Faro (-47%), Funchal (-26%), Lisbon (-39%), Ponta Delgada (-30%), Porto (-43%)

Romania: Suceava (+23%)

Russia: Moscow DME (-1%)

Serbia: Nis (-44%)

Slovakia: Kosice (-53%)

Sweden: all airports (-61%), Stockholm NYO (-75%)

Monday 14 February 2022 - Sunday 20 February 2022