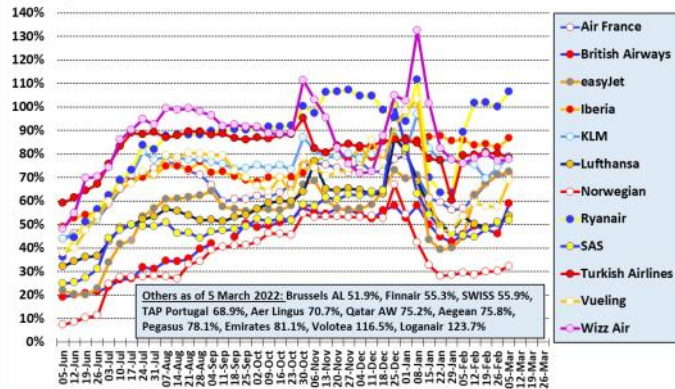


### Major European airlines in 2021/22 (to 5 Mar 22)

Percent of flights versus same period in 2019 - weekly moving average

Source: Analysis of Eurocontrol data

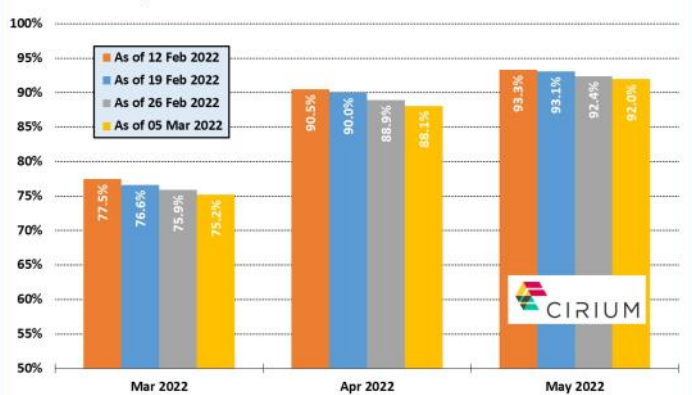


ANKER REPORT

### European capacity in 2022

Planned monthly seat capacity as % of 2019 figure by date

Source: Cirium Data and Analytics



ANKER REPORT

### New European Routes Database (NERD)

| Start Date | Airline              | From              | DC | DA  | To                | AC | AA  | WF | A/c  | km   | Competition |
|------------|----------------------|-------------------|----|-----|-------------------|----|-----|----|------|------|-------------|
| 28-Feb-22  | Eurowings            | Düsseldorf        | de | DUS | Graz              | at | GRZ | 3  | A319 | 792  | -           |
| 28-Feb-22  | Iberia               | A Coruna          | es | LCG | Palma de Mallorca | es | PMI | 2  | CRK  | 1017 | -           |
| 01-Mar-22  | Danish Air Transport | Oslo              | no | OSL | Ørland            | no | OLA | 6  | ATR4 | 398  | -           |
| 01-Mar-22  | FlyOne Armenia       | Yerevan           | am | EVN | Moscow Vnukovo    | ru | VKO | 2  | A320 | 1794 | -           |
| 02-Mar-22  | Ryanair              | Edinburgh         | gb | EDI | Marrakech         | ma | RAK | 2  | B738 | 2729 | -           |
| 02-Mar-22  | Wizz Air             | Venice Marco Polo | it | VCE | Lamezia Terme     | it | SUF | 3  | A325 | 800  | -           |
| 03-Mar-22  | Ryanair              | Porto             | pt | OPO | Fez               | ma | FEZ | 2  | B738 | 874  | -           |
| 03-Mar-22  | Wizz Air             | Venice Marco Polo | it | VCE | London Luton      | gb | LTN | 4  | A325 | 1172 | -           |
| 04-Mar-22  | Eurowings            | Prague            | cz | PRG | Stockholm Arlanda | se | ARN | 2  | A325 | 1090 | OK (2)      |
| 04-Mar-22  | Ryanair              | Seville           | es | SVQ | Oujda             | ma | OUJ | 2  | B738 | 462  | -           |
| 04-Mar-22  | Wizz Air             | Venice Marco Polo | it | VCE | Tallinn           | ee | TLL | 2  | A325 | 1759 | -           |
| 05-Mar-22  | Corendon Airlines    | Basel             | ch | BSL | Palma de Mallorca | es | PMI | 1  | B738 | 974  | U2 (7)      |
| 05-Mar-22  | Wizz Air             | Venice Marco Polo | it | VCE | Cagliari          | it | CAG | 2  | A325 | 745  | -           |
| 05-Mar-22  | Eurowings            | Prague            | cz | PRG | Alicante          | es | ALC | 1  | A325 | 1762 | -           |

### European airport passenger statistics

During the last week the following airports have revealed traffic statistics for January 2022. The percentage figure shown is traffic compared with pre-pandemic January 2019.

**Albania:** Tirana (+13%)

**Austria:** Graz (-77%), Salzburg (-58%)

**Belarus:** Minsk (-54%)

**France:** All airports (-50%), Ajaccio (-19%), Bastia (-18%), Biarritz (-42%), Bordeaux (-52%), Lille (-35%), Lyon (-55%), Marseille (-47%), Nantes (-47%), Nice (-43%), Paris BVA (-28%), Toulouse (-56%).

**Germany:** All airports (-60%), Cologne Bonn (-59%), Dortmund (-30%), Düsseldorf (-66%), Hannover (-62%), Memmingen (-22%), Nuremberg (-73%), Stuttgart (-67%).

**Greece:** All airports (-42%), Heraklion (-33%)

**Ireland:** Shannon (-50%)

**Italy:** Bologna (-51%), Cagliari (-40%), Florence (-67%), Milan BGY (-43%), Milan LIN (-47%), Milan MXP (-53%), Naples (-35%), Olbia (-35%), Palermo (-23%), Perugia (-45%), Pisa (-54%), Rome CIA (-59%), Rome FCO (-66%), Trapani (-15%), Trieste (-42%), Turin (-34%), Venice TSF (-60%), Venice VCE (-58%), Verona (-45%).

**Kosovo:** Pristina (+15%)

**Luxembourg:** Luxembourg (-43%)

**Moldova:** Chisinau (-19%)

**North Macedonia:** Ohrid (+15%), Skopje (-26%)

**Romania:** Cluj-Napoca (-42%), Bucharest (-40%)

**Russia:** Moscow VKO (-9%), Moscow SVO (-30%)

**Serbia:** Belgrade (-31%)

**Switzerland:** All airports (-55%), Basel (-51%)

**UK:** All airports (-62%), Aberdeen (-56%), Belfast BFS (-56%), Belfast BHD (-61%), Birmingham (-66%), Cardiff (-85%), Doncaster/Sheffield (-60%),

Edinburgh (-66%), Glasgow (-59%), Inverness (-56%), Jersey (-47%), Leeds Bradford (-65%), Liverpool (-67%), London LCY (-80%), London LGW (-73%), London LTN (-61%), Newcastle (-62%), Southampton (-83%).

Also, we finally have December 2021 data for several more Italian airports. Percentage figure shown is traffic compared with pre-pandemic December 2019.

**Italy:** All airports (-35%), Alghero (-5%), Bari (-5%), Bologna (-34%), Brindisi (-4%), Cagliari (-22%), Catania (-13%), Comiso (+48%), Florence (-59%), Genoa (-22%), Lamezia Terme (-12%), Pescara (-14%), Pisa (-34%).

### New route announcements

**Eurowings:** Will add seven new routes from Hamburg starting in April/May. There are two new routes to Portugal (Lisbon and Porto) two to Spain (Alicante and Bilbao) as well Chania (Greece), Gothenburg (Sweden) and Verona (Italy).

**Flyr:** Announced five new routes from Oslo starting in June/July. The new services are to Faro, Ibiza, Madrid, Porto and Valencia. Faro will be served weekly, the others 2-weekly.

**Ryanair:** Announced during the last week that it expects to operate 181 routes from its three London airports in S22, including 14 new routes. It also confirmed that it will be operating 61 routes from Paris BVA (including 13 new routes) and 42 routes from Bordeaux (including 11 new routes).

**Volotea:** Has added two routes from Turin to Athens (2-weekly from 27 May) and Santorini (weekly from 4 July). It has also confirmed the five additional new services from its new Lille base; Calvi, Palermo, Palma de Mallorca, Split and Varna.

### Airline traffic statistics for February 2022: pax (load factor)

**Norwegian:** 643k (81.3%)

**Ryanair:** 8.7m (86%)

**Wizz Air:** 1.92m (91%)

*NB: Air France KLM Group, IAG and Lufthansa Group now only report traffic statistics on a quarterly basis. All three published their results for 2021 Q4 and 2021 as a whole during February.*