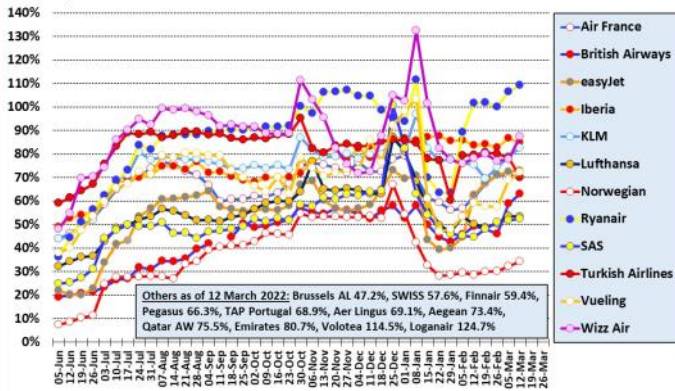


### Major European airlines in 2021/22 (to 12 Mar 22)

Percent of flights versus same period in 2019 - weekly moving average

Source: Analysis of Eurocontrol data

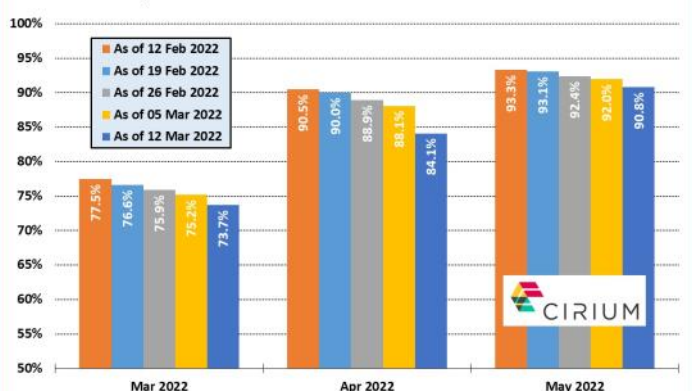


ANKER REPORT

### European capacity in 2022

Planned monthly seat capacity as % of 2019 figure by date

Source: Cirium Data and Analytics



ANKER REPORT

### New European Routes Database (NERD)

Start Date	Airline	From	DC	DA	To	AC	AA	WF	A/c	km	Competition
07-Mar-22	Iberia	Seville	es	SVQ	Alicante	es	ALC	3	CRK	480	FR (3)
07-Mar-22	Royal Air Maroc	London Gatwick	gb	LGW	Marrakech	ma	RAK	2	B738	2264	TOM (2)
08-Mar-22	Iberia	Santiago de Compostela	es	SCQ	Alicante	es	ALC	1	CRK	838	FR (4)
08-Mar-22	Iberia	Santiago de Compostela	es	SCQ	Barcelona	es	BCN	1	CRK	885	VY (17), FR (4)
08-Mar-22	Wizz Air	Tirana	al	TIA	Liverpool	gb	LPL	2	A32S	2144	-
11-Mar-22	LEVEL	Barcelona	es	BCN	Los Angeles, CA	us	LAX	3	A332	9696	-
12-Mar-22	Iberia	Santiago de Compostela	es	SCQ	Almeria	es	LEI	2	CRK	847	-

### European airport passenger statistics

During the last week the following airports have revealed traffic statistics for February 2022. The percentage figure shown is traffic compared with pre-pandemic February 2019.

- Austria:** Innsbruck (-34%)
- Croatia:** Dubrovnik (-43%), Split (-44%), Zagreb (-18%)
- Cyprus:** All airports (-43%), Larnaca (-51%), Paphos (-21%).
- Denmark:** All airports (-47%), Aalborg (-31%), Aarhus (-48%), Billund (-37%), Copenhagen (-49%).
- Estonia:** Tallinn (-35%)
- Finland:** All airports (-48%), Helsinki (-60%), Ivalo (-25%), Kittila (-9%), Oulu (-68%), Rovaniemi (-24%).
- France:** Montpellier (-15%), Strasbourg (-45%).
- Greece:** Athens (-37%)
- Hungary:** Budapest (-36%)
- Iceland:** All airports (-52%), Reykjavik KEF (-54%).
- Ireland:** Dublin (-34%), Cork (-36%).
- Lithuania:** All airports (-38%), Kaunas (-21%), Palanga (-52%), Vilnius (-41%).
- Netherlands:** Amsterdam (-45%), Eindhoven (-24%).
- Norway:** All airports (-42%), Bergen (-28%), Bodo (-28%), Oslo OSL (-48%), Oslo TRF (-48%), Stavanger (-43%), Tromsø (-26%), Trondheim (-40%).
- Poland:** Katowice (-38%), Krakow (-23%), Poznan (-40%), Wroclaw (-46%).
- Sweden:** Gothenburg (-58%), Malmö (-59%), Stockholm ARN (-56%).
- Turkey:** All airports (-26%), Ankara (-48%), Antalya (-25%), Istanbul IST (-26%), Istanbul SAW (-16%), Izmir (-38%).
- UK:** London LHR (-48%)

### New route announcements

**Amelia:** Announced that it would be launching two international routes from Strasbourg next month. From 9 April it will use its ERJ-145s to connect the French airport with Amsterdam (5-weekly) and Munich (10-weekly).

**Ryanair:** Revealed that it would be launching several additional new routes this summer including Budapest-Alghero, Budapest-Warsaw WMI, Memmingen-Pisa, Memmingen-Pescara, Porto-Bergerac, Riga-Växjö, Turin-Wroclaw. It also confirmed its expanded summer programme at Bordeaux, Marseille, Toulouse, Turin and Vienna.



**Volotea:** Confirmed that it would be starting a new service between Strasbourg and Rome FCO, operating 2-weekly from 27 May.

**Wizz Air:** Will add new routes this summer from Bari, Naples and Rome FCO to Skiathos in Greece. All will be served 2-weekly from June/July.

### Airline traffic statistics for February 2022: pax (load factor)

- airBaltic:** 125.2k
- Finnair:** 443k (43.9% overall, 73.6% domestic, 63.8% Europe, 32.4% Asia, 25.3% North Atlantic)
- Icelandair:** 108.7k (66%)
- SAS:** 946k (58.1%)
- Turkish Airlines:** 4.0m (68.5%)

*NB: Air France KLM Group, IAG and Lufthansa Group now only report traffic statistics on a quarterly basis. All three published their results for 2021 Q4 and 2021 as a whole during February.*