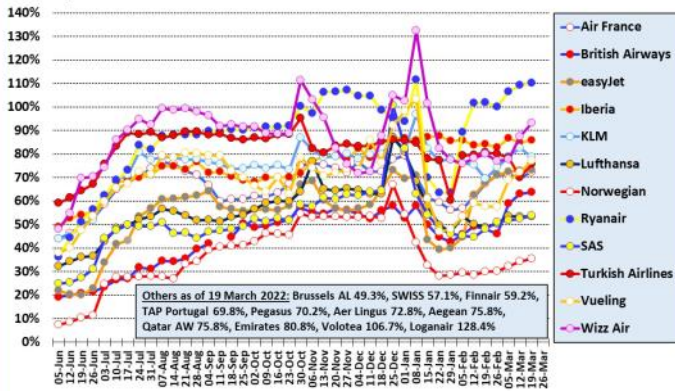


### Major European airlines in 2021/22 (to 19 Mar 22)

Percent of flights versus same period in 2019 - weekly moving average

Source: Analysis of Eurocontrol data

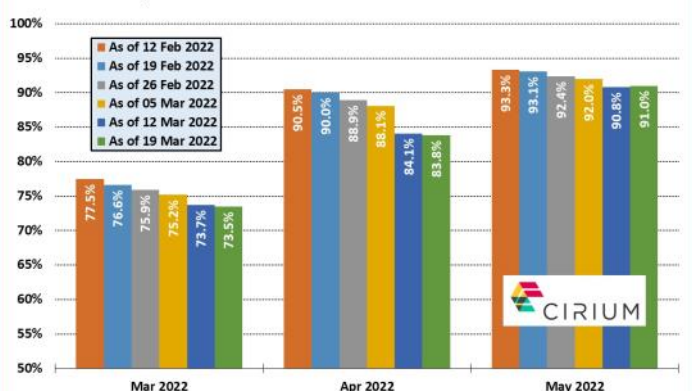


**ANKER REPORT**

### European capacity in 2022

Planned monthly seat capacity as % of 2019 figure by date

Source: Cirium Data and Analytics



**ANKER REPORT**

### New European Routes Database (NERD)

Start Date	Airline	From	DC	DA	To	AC	AA	WF	A/c	km	Competition
16-Mar-22	Aurigny	Guernsey	gb	GCI	Dublin	ie	DUB	3	ATR7	512	-
17-Mar-22	TUS Airways	Düsseldorf	de	DUS	Tel Aviv	il	TLV	2	A320	3138	-
18-Mar-22	Pegasus Airlines	Istanbul Sabiha Gokcen	tr	SAW	Ganja	az	GNJ	2	A320	1432	-
19-Mar-22	SunExpress	Antalya	tr	AYT	Helsinki	fi	HEL	1	B738	2638	AY (4), PC (1)

### European airport passenger statistics

During the last week the following airports have revealed traffic statistics for February 2022. The percentage figure shown is traffic compared with pre-pandemic February 2019.

- Austria:** Vienna (-53%)
- Belgium:** Brussels BRU (-50%)
- Bosnia & Herzegovina:** Sarajevo (-5%)
- Bulgaria:** Bourgas (-31%), Varna (-26%).
- Czech Republic:** Prague (-55%)
- France:** Paris CDG (-42%), Paris ORY (-27%), Pau (-64%).
- Georgia:** Kutaisi (-25%)
- Germany:** Berlin (-63%), Frankfurt (-53%), Hamburg (-61%), Munich (-62%).
- Gibraltar:** Gibraltar (-33%).
- Greece:** Chania (-22%), Corfu (-20%), Kos (-25%), Mytilene (-23%), Rhodes (-25%), Thessaloniki (-36%).
- Latvia:** Riga (-47%)
- Malta:** Malta (-45%)
- Poland:** Warsaw WAW (-50%)
- Portugal:** **All airports (-24%)**, Faro (-23%), Funchal (-17%), Lisbon (-25%), Ponta Delgada (-18%), Porto (-23%).
- Russia:** St. Petersburg (-3%)
- Serbia:** Nis (-34%)
- Slovakia:** Kosice (-43%)
- Slovenia:** Ljubljana (-64%)
- Spain:** **All airports (-27%)**, A Coruna (-43%), Alicante (-25%), Asturias (-18%), Barcelona (-39%), Bilbao (-39%), Fuerteventura (-13%), Gran Canaria (-21%), Granada (-48%), Ibiza (-7%), Lanzarote (-11%), La Palma (-38%), Madrid (-31%), Malaga (-17%), Menorca (-13%), Palma de Mallorca (-20%), Santander (-27%), Santiago de Compostela (-17%), Seville (-23%), Tenerife TFN (-9%), Tenerife TFS (-14%), Valencia (-25%), Vigo (-33%).
- Sweden:** **All airports (-59%)**, Stockholm NYO (-80%).
- Switzerland:** **All airports (-44%)**, Basel (-41%), Geneva (-34%), Zurich (-52%).
- Turkey:** Adana (-31%), Bodrum (-20%), Dalaman (+5%), Diyarbakir (-17%), Erzurum (-7%), Gaziantep (-19%), Hatay (-24%), Kars (+3%), Kayseri (-22%), Konya (-42%), Malatya (-22%), Mardin (-6%), Ordu-Giresun (-26%), Samsun Carsamba (-27%), Trabzon (-27%), Van (-11%).
- UK:** East Midlands (-48%), Liverpool (-49%), London STN (-39%), Manchester (-37%).



### New route announcements

- BA CityFlyer:** Will operate weekly flights between Southampton and Dublin starting on 15 May. Eastern Airways already serves this market.
- easyJet:** Has announced new routes between Birmingham and Faro (2-weekly), London LGW and Rennes (up to 5-weekly), and Palma de Mallorca and Milan LIN (4-weekly).
- Flyr:** Will add flights from its hub at Oslo to Alghero, Montpellier, Porto and Thessaloniki starting in June/July. All will be operated 2-weekly.
- Ryanair:** Announced several new routes for this summer, including Barcelona-Poitiers, Brussels CRL-Castellon, Cologne Bonn-Biarritz, Cologne Bonn-Stockholm ARN, Madrid-Faro, Nuremberg-Lamezia Terme, Rome FCO-Toulouse, Shannon-Marseille, Vilnius-Gdansk and Warsaw WMI-Kaunas.