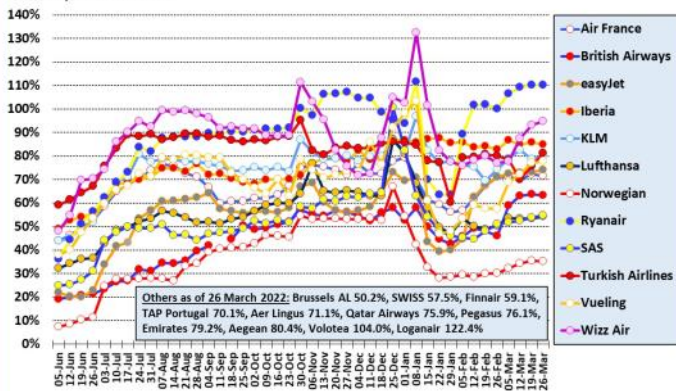


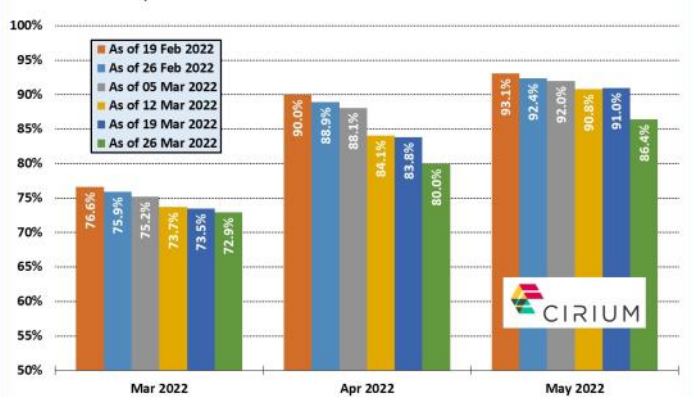
### Major European airlines in 2021/22 (to 26 Mar 22)

Percent of flights versus same period in 2019 - weekly moving average  
Source: Analysis of Eurocontrol data



### European capacity in 2022

Planned monthly seat capacity as % of 2019 figure by date  
Source: Cirium Data and Analytics



### New European Routes Database (NERD)

| Start Date | Airline         | From       | DC | DA  | To              | AC | AA  | WF | A/c  | km   | Competition            |
|------------|-----------------|------------|----|-----|-----------------|----|-----|----|------|------|------------------------|
| 22-Mar-22  | Bamboo Airways  | Hanoi      | vn | HAN | London Heathrow | gb | LHR | 1  | B789 | 9252 | VN (2)                 |
| 22-Mar-22  | TUI Airways     | Manchester | gb | MAN | Melbourne, FL   | us | MLB | 5  | B788 | 6801 | -                      |
| 23-Mar-22  | Iberia          | Barcelona  | es | BCN | Valladolid      | es | VLL | 1  | CRK  | 581  | FR (3), VY (3)         |
| 25-Mar-22  | Aegean Airlines | Kalamata   | gr | KLX | Helsinki        | fi | HEL | 1  | A320 | 2594 | -                      |
| 25-Mar-22  | Flyr            | Oslo       | no | OSL | Barcelona       | es | BCN | 6  | B738 | 2192 | DY (9), SK (3), VY (2) |
| 25-Mar-22  | Flyr            | Oslo       | no | OSL | Berlin          | de | BER | 4  | B738 | 885  | DY (13), SK (3)        |
| 26-Mar-22  | GullivAir       | Sofia      | bg | SOF | Skopje          | mk | SKP | 2  | ATR7 | 169  | -                      |
| 26-Mar-22  | WestJet         | Calgary    | ca | YYC | London Heathrow | gb | LHR | 4  | B789 | 7038 | AC (5)                 |

### European airport passenger statistics

During the last week the following airports have revealed traffic statistics for February 2022. The percentage figure shown is traffic compared with pre-pandemic February 2019.

- Albania:** Tirana (+22%)
- Austria:** Graz (-76%), Salzburg (-43%).
- Belarus:** Minsk (-59%)
- Belgium:** Antwerp (-10%), Brussels CRL (-15%), Liege (+14%), Ostend (-26%).
- Bulgaria:** Sofia (-37%)
- France:** Ajaccio (-4%), Bastia (-11%), Bordeaux (-33%), Calvi (+11%), Chambéry (-36%), Lyon (-41%), Marseille (-26%), Nantes (-25%), Nice (-26%), Paris BVA (-3%), Toulouse (-40%).
- Georgia:** Batumi (+38%), Tbilisi (-34%).
- Germany:** Bremen (-63%), Cologne Bonn (-55%), Düsseldorf (-66%), Frankfurt HHN (-61%), Hannover (-62%), Memmingen (-20%), Münster/Osnabrück (-61%), Nuremberg (-73%), Stuttgart (-70%).
- Greece:** Alexandroupolis (-16%), Chios (-8%), Heraklion (-33%).
- Ireland:** Shannon (-29%)
- Italy:** Ancona (-37%), Bologna (-33%), Cagliari (-28%), Catania (-18%), Milan BGY (-16%), Milan LIN (-40%), Milan MXP (-44%), Naples (-23%), Olbia (-26%), Palermo (-7%), Pisa (-34%), Rome CIA (-48%), Rome FCO (-59%), Turin (-27%), Venice TSF (-40%), Venice VCE (-48%), Verona (-41%).
- Kosovo:** Pristina (+13%)
- Luxembourg:** Luxembourg (-28%)
- Moldova:** Chisinau (-40%)
- North Macedonia:** Skopje (-35%)
- Romania:** Bucharest OTP (-39%), Timisoara (-61%).
- Serbia:** Belgrade (-34%)
- UK:** Aberdeen (-46%), Belfast BFS (-32%), Bournemouth (-7%), Cardiff (-76%), City of Derry (-27%), Doncaster Sheffield (-55%), Edinburgh (-45%), Exeter (-75%), Glasgow GLA (-43%), Guernsey (-38%), Inverness (-47%), Isle Of Man (-43%), Jersey (-33%), Leeds Bradford (-44%), London LCY (-66%), London LGW (-59%), London LTN (-48%), Newcastle (-46%), Southampton (-76%).

