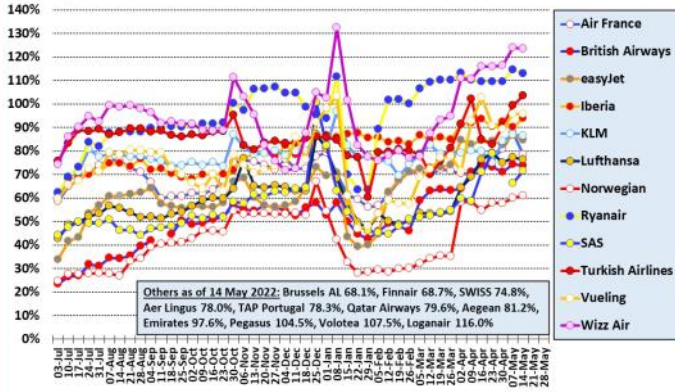




Major European airlines in 2021/22 (to 14 May 22)

Percent of flights versus same period in 2019 - weekly moving average

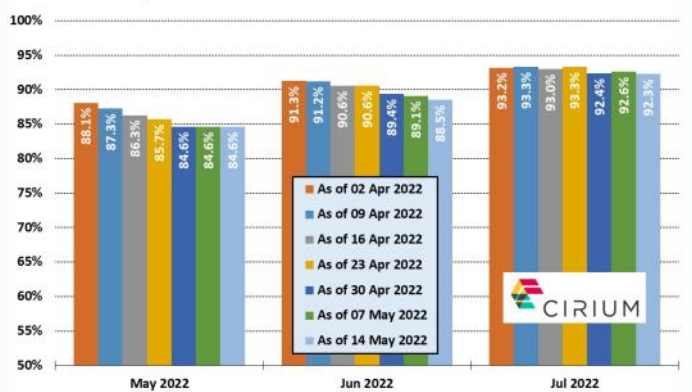
Source: Analysis of Eurocontrol data



European capacity in 2022

Planned monthly seat capacity as % of 2019 figure by date

Source: Cirium Data and Analytics



New European Routes Database (NERD)

Start Date	Airline	From	DC	DA	To	AC	AA	WF	A/c	km	Competition
08-May-22	Air Montenegro	Podgorica	me	TGD	Frankfurt	de	FRA	2	E195	1184	-
08-May-22	Eurowings	Berlin	de	BER	Kos	gr	KGS	2	A319	2033	SR (4), U2 (4), FR (3)
08-May-22	Volotea	Lille	fr	LIL	Split	hr	SPU	1	A325	1270	-
09-May-22	Loganair	Dundee	gb	DND	Sumburgh	gb	LSI	2	ATR4	396	-
10-May-22	TUI Airways	Newcastle	gb	NCL	Girona	es	GRO	1	B737	1495	LS (1)
10-May-22	Volotea	Olbia	it	OLB	Deauville	fr	DOL	1	A320	1193	-
11-May-22	Air Cairo	Skopje	mk	SKP	Hurghada	eg	HRG	2	A320	1979	-
11-May-22	Air Transat	Quebec City	ca	YQB	London Gatwick	gb	LGW	1	A321	5029	-
11-May-22	easyJet	Faro	pt	FAO	Birmingham	gb	BHX	2	A325	1783	FR (9), LS (8), TOM (2)
11-May-22	Jet2.com	Bristol	gb	BRS	Verona	it	VRN	1	B738	1202	TOM (1)
11-May-22	PLAY	Reykjavik	is	KEF	Boston	us	BOS	7	A321	3883	FI (18)
12-May-22	Air Astana	Aktau	kz	SCO	London Heathrow	gb	LHR	2	A321N	3879	-
12-May-22	Icelandair	Reykjavik	is	KEF	Raleigh-Durham, NC	us	RDU	4	B7M8	4854	-
12-May-22	Jet2.com	Bristol	gb	BRS	Reus	es	REU	1	B738	1175	TOM (2)
13-May-22	Albastar	Milan Bergamo	it	BGY	Dakar	sn	DSS	2	B738	4253	-
13-May-22	Icelandair	Reykjavik	is	KEF	Baltimore/Washington, MD	us	BWI	4	B7M9	4445	OG (7)
13-May-22	PLAY	Reykjavik	is	KEF	Lisbon	pt	LIS	2	A321	2942	-
13-May-22	skyalps	Bolzano	it	BZO	Palma de Mallorca	es	PMI	1	Q400	1038	-
13-May-22	United Airlines	New York Newark, NJ	us	EWB	Ponta Delgada	pt	PDL	3	B7M8	4147	-
14-May-22	Air France	Toulouse	fr	TLS	Oran	dz	ORN	1	A318	904	AH (3)
14-May-22	AnadoluJet	Ankara	tr	ESB	Rize	tr	RZV	7	B738	673	-
14-May-22	AnadoluJet	Istanbul Sabiha Gokcen	tr	SAW	Rize	tr	RZV	7	B738	969	-
14-May-22	BA CityFlyer	Southampton	gb	SOU	Florence	it	FLR	1	E190	1233	-
14-May-22	BA CityFlyer	Southampton	gb	SOU	Limoges	fr	LIG	1	E190	595	-
14-May-22	BA CityFlyer	Southampton	gb	SOU	Nice	fr	NCE	1	E190	1036	-
14-May-22	Eurowings	Palma de Mallorca	es	PMI	Memmingen	de	FMM	3	A325	1115	FR (9)
14-May-22	Turkish Airlines	Istanbul	tr	IST	Rize	tr	RZV	21	A320	1014	-

European airport passenger statistics (April)

The following airports have revealed traffic statistics for April 2022 during the last week. The percentage figure shown is traffic compared with pre-pandemic April 2019.

Austria: Innsbruck (-35%)

Belgium: Antwerp (-5%), Brussels BRU (-31%), Ostend (-16%).

Bosnia & Herzegovina: Sarajevo (+5%)

Bulgaria: Bourgas (-21%), Varna (-6%).

Croatia: all airports (-24%), Dubrovnik (-44%), Split (-15%), Zadar (-19%), Zagreb (-9%).

Cyprus: all airports (-15%), Larnaca (-27%), Paphos (+11%).

Denmark: all airports (-24%), Aalborg (+1%), Aarhus (-15%), Billund (+2%), Copenhagen (-28%).

Estonia: Tallinn (-19%)

Finland: all airports (-47%), Helsinki (-47%), Kittila (-23%), Oulu (-38%), Rovaniemi (-26%).

France: Paris CDG (-29%), Paris ORY (21%), Pau (-39%).

Germany: Frankfurt (-34%), Hamburg (-38%), Munich (-36%).

Gibraltar: Gibraltar (+3%)

Greece: Athens (-16%), Chania (+0%), Corfu (+7%), Kos (+5%), Mykonos (-4%), Mytilene (-6%), Rhodes (+7%), Santorini (-5%), Thessaloniki (-12%), Zakynthos (+11%).

Iceland: All airports (-16%), Akureyri (+7%), Reykjavik KEF (-18%), Reykjavik RKV (+5%).

Ireland: Cork (-9%), Dublin (-15%).

Italy: Turin (+10%) **Kosovo:** Pristina (+36%) **Latvia:** Riga (-35%)

Lithuania: all airports (-17%), Kaunas (+8%), Palanga (-11%), Vilnius (-24%).

Malta: Malta (-21%)

Netherlands: Amsterdam (-27%), Eindhoven (-10%).

Norway: all airports (-12%), Alesund (-11%), Bergen (-3%), Bodo (-1%), Harstad/Narvik (+12%), Kristiansand (-27%), Oslo OSL (-18%), Oslo TRF (-11%), Stavanger (-12%), Tromsø (+6%), Trondheim (-5%).

Poland: Krakow (-12%), Poznan (-2%), Rzeszow (-18%), Wroclaw (-30%).

Slovenia: Ljubljana (-56%)

Spain: all airports (-12%), Alicante (-11%), Barcelona (-22%), Bilbao (-16%), Fuerteventura (+1%), Gran Canaria (-3%), Ibiza (+4%), Lanzarote (+3%), Madrid (-20%), Malaga (-9%), Palma de Mallorca (-3%), Seville (-12%), Tenerife TFN (-3%), Tenerife TFS (+2%), Valencia (-5%).

Sweden: all airports (-33%), Gothenburg (-34%), Lulea (-14%), Malmo (-29%), Stockholm ARN (-27%), Stockholm BMA (-55%), Stockholm NYO (-78%).

Switzerland: Geneva (-20%), Zurich (-33%).

Turkey: all airports (-27%), Ankara (-51%), Antalya (-29%), Bodrum (-23%), Dalaman (-37%), Istanbul IST (-16%), Istanbul SAW (-19%), Izmir (-28%).

UK: London LHR (-25%), London STN (-16%), Manchester (-21%).