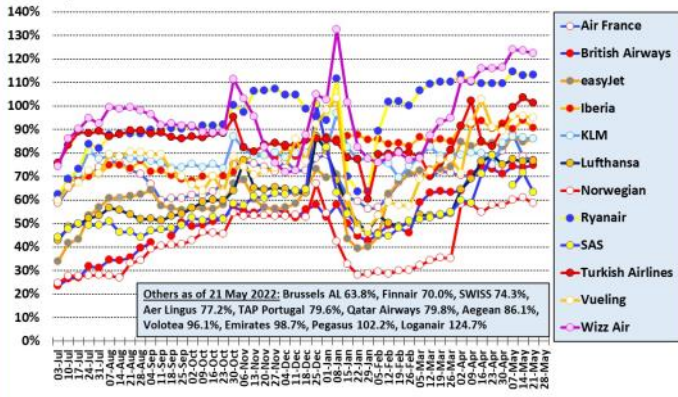


Major European airlines in 2021/22 (to 21 May 22)

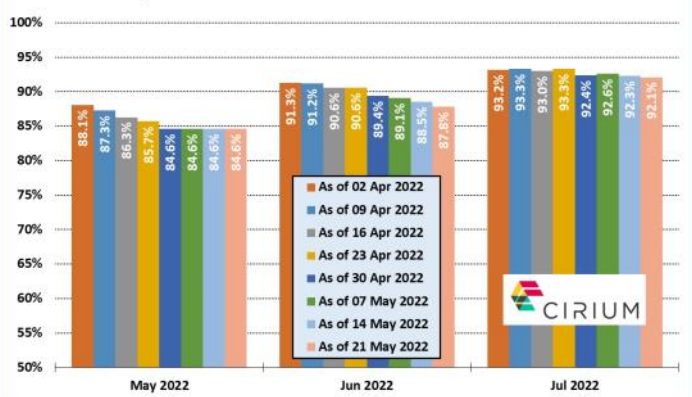
Percent of flights versus same period in 2019 - weekly moving average
Source: Analysis of Eurocontrol data



ANKER REPORT

European capacity in 2022

Planned monthly seat capacity as % of 2019 figure by date
Source: Cirium Data and Analytics



ANKER REPORT

New European Routes Database (NERD)

Start Date	Airline	From	DC	DA	To	AC	AA	WF	A/c	km	Competition
15-May-22	BA CityFlyer	Southampton	gb	SOU	Dublin	ie	DUB	1	E190	435	T3 (7)
15-May-22	British Airways	London Gatwick	gb	LGW	Athens	gr	ATH	2	A320	2396	U2 (17), W9 (7)
15-May-22	Eurowings	Düsseldorf	de	DUS	Belgrade	rs	BEG	3	A319	1238	JU (7)
15-May-22	Jet2.com	London Stansted	gb	STN	Kalamata	gr	KLX	1	B738	2374	FR (1)
15-May-22	Jet2.com	London Stansted	gb	STN	Olbia	it	OLB	1	B738	1411	-
15-May-22	Uzbekistan Airways	Bukhara	uz	BHK	Istanbul	tr	IST	2	A320	3013	TK (2)
15-May-22	Volotea	Toulouse	fr	TLS	Faro	pt	FAO	2	A319	1080	-
15-May-22	WestJet	Toronto Pearson	ca	YYZ	Dublin	ie	DUB	7	B7M8	5277	AC (7), EI (7), TS (5)
16-May-22	AnadolulJet	Istanbul Sabiha Gökçen	tr	SAW	Milan Bergamo	it	BGY	7	B738	1672	PC (12)
16-May-22	British Airways	London Gatwick	gb	LGW	Berlin	de	BER	7	A320	954	U2 (30)
16-May-22	Eurowings	Innsbruck	at	INN	Heraklion	gr	HER	2	A325	1754	-
16-May-22	Volotea	Lille	fr	LIL	Palma de Mallorca	es	PMI	1	A325	1225	U2 (2), TB (1)
17-May-22	Air France	Paris CDG	fr	CDG	Quebec City	ca	YQB	3	A332	5308	TS (3)
17-May-22	Loganair	Edinburgh	gb	EDI	City of Derry	gb	LDY	2	ERJ145	261	-
17-May-22	TUI Airways	Teesside	gb	MME	Palma de Mallorca	es	PMI	1	B738	1691	FR (2)
17-May-22	Volotea	Lille	fr	LIL	Varna	bg	VAR	1	A325	2041	-
18-May-22	Air Astana	Aktau	kz	SCO	Antalya	tr	AYT	1	A320	1883	-
18-May-22	Condor	Stuttgart	de	STR	Mykonos	gr	JMK	1	A320	1807	EW (1)
19-May-22	Blue Islands	Jersey	gb	JER	Dublin	ie	DUB	4	ATR7	547	-
19-May-22	British Airways	London Gatwick	gb	LGW	Milan Malpensa	it	MLP	6	A320	901	U2 (33), W6 (14)
19-May-22	Condor	Frankfurt	de	FRA	San Francisco, CA	us	SFO	3	B763	9172	LH (7), UA (7)
19-May-22	Volotea	Lyon	fr	LYS	Menorca	es	MAH	1	A325	655	-
20-May-22	Aegean Airlines	Athens	gr	ATH	Oslo	no	OSL	2	A320	2638	DY (4), SK (2)
20-May-22	Air Astana	Atyrau	kz	GUR	Antalya	tr	AYT	2	A320	2074	-
20-May-22	Air Cairo	Banja Luka	ba	BNX	Hurghada	eg	HRG	2	A320	2457	-
20-May-22	Condor	Stuttgart	de	STR	Kefalonia	gr	EFL	1	A320	1485	-
20-May-22	Corendon Airlines	Hannover	de	HAN	Faro	pt	FAO	1	B73G	2202	X3 (2)
20-May-22	PLAY	Reykjavik	is	KEF	Göteborg	se	GOT	2	A321	1994	-
20-May-22	SundAir	Hamburg Lübeck	de	LBC	Antalya	tr	AYT	2	A319	2432	-
20-May-22	United Airlines	New York Newark, NJ	us	EWB	Bergen	no	BGO	3	B752	5634	-
20-May-22	WestJet	Toronto Pearson	ca	YYZ	Glasgow	gb	GLA	3	B7M8	5300	TS (4)
21-May-22	Air Canada	Montreal	ca	YUL	Milan Malpensa	it	MLP	5	A333	6132	-
21-May-22	Air France	Toulouse	fr	TLS	Algiers	dz	ALG	1	A325	787	AH (2)
21-May-22	Condor	Düsseldorf	de	DUS	Dubrovnik	hr	DBV	1	A321	1304	EW (1), OU (1)
21-May-22	Condor	Düsseldorf	de	DUS	Rijeka	hr	RJK	2	EQV	888	EW (2)
21-May-22	Condor	Vienna	at	VIE	Heraklion	gr	HER	3	A320	1587	OS (7), A3 (3), FR (2), XR (2)
21-May-22	Eurowings	Düsseldorf	de	DUS	Volos	gr	VOL	1	A325	1831	-
21-May-22	Eurowings	Innsbruck	at	INN	Palma de Mallorca	es	PMI	2	A319	1104	-
21-May-22	Loganair	Newcastle	gb	NCL	Bergen	no	BGO	2	ERJ145	715	-
21-May-22	Lufthansa	Munich	de	MUC	Kalamata	gr	KLX	1	A319	1505	A3 (2), DE (2)
21-May-22	Luxair	Luxembourg	lu	LUX	Westerland/Sylt	de	GWG	2	Q400	607	-
21-May-22	skyalps	Bolzano	it	BZO	Brac	hr	BWK	1	Q400	550	-

European airport passenger statistics (April)

The following airports have revealed traffic statistics for April 2022 during the last week. The percentage figure shown is traffic compared with pre-pandemic April 2019.

Austria: Vienna (-35%)

Bulgaria: Sofia (-15%)

Czech Republic: Prague (-42%)

France: Bordeaux (-29%), Lyon (-32%), Marseille (-17%), Nantes (-25%), Nice (-20%), Paris BVA (+13%), Toulouse (-27%).

Poland: Warsaw WAW (-35%), Warsaw WMI (-3%).

Portugal: All airports (-7%), Faro (-10%), Funchal (+25%), Lisbon (-12%), Ponta Delgada (-6%), Porto (-1%).

Slovakia: Kosice (+3%)

Switzerland: Basel (-23%)

UK: Liverpool (-28%)

