



AIR SERVICE ONE
NEWS - DATA - ANALYSIS

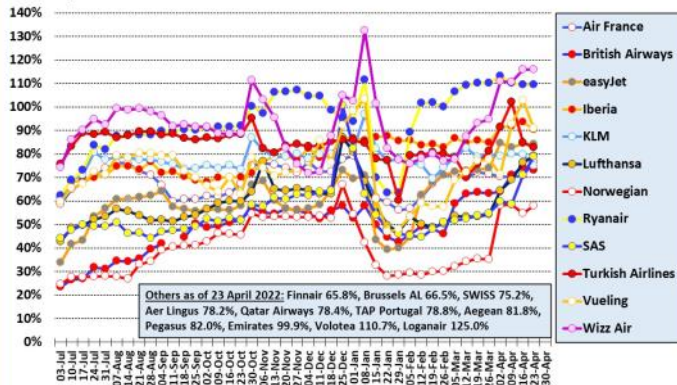
Last week in Europe

17 April 2022 - 23 April 2022

Major European airlines in 2021/22 (to 23 Apr 22)

Percent of flights versus same period in 2019 - weekly moving average

Source: Analysis of Eurocontrol data

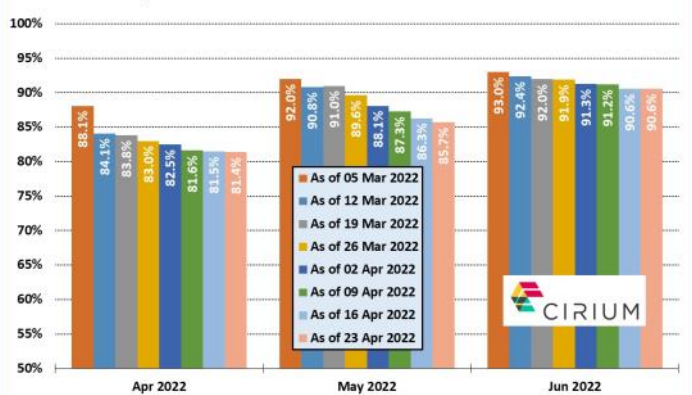


ANKER REPORT

European capacity in 2022

Planned monthly seat capacity as % of 2019 figure by date

Source: Cirium Data and Analytics



ANKER REPORT

New European Routes Database (NERD)

Start Date	Airline	From	DC	DA	To	AC	AA	WF	A/c	km	Competition
17-Apr-22	Ryanair	Dublin	ie	DUB	Suceava	ro	SCV	2	B738	2374	-
18-Apr-22	Condor	Düsseldorf	de	DUS	Athens	gr	ATH	4	A320	2005	A3 (5), EW (4)
19-Apr-22	Loganair	Isle of Man	gb	IOM	London City	gb	LCY	6	ATR7	426	-
20-Apr-22	PLAY	Reykjavik	is	KEF	Baltimore/Washington, MD	us	BWI	7	A321	4445	-
20-Apr-22	Transavia France	Lyon	fr	LYS	Oran	dz	ORN	1	B738	1220	AH (3)
21-Apr-22	Air Serbia	Belgrade	rs	BEG	Valencia	es	VLC	1	A319	1812	-
22-Apr-22	Transavia	Amsterdam	nl	AMS	Kefalonia	gr	EFL	1	B738	1994	-
22-Apr-22	Transavia	Rotterdam	nl	RTM	Bastia	fr	BIA	2	B737	1112	-
22-Apr-22	TUS Airways	Paris CDG	fr	CDG	Larnaca	cy	LCA	2	A320	2987	U2 (2)
23-Apr-22	Eurowings Discover	Frankfurt	de	FRA	Male	mv	MLE	2	A333	7881	-
23-Apr-22	SunExpress	Dalaman	tr	DLM	Amsterdam	nl	AMS	1	B738	2557	OR (4)
23-Apr-22	Transavia France	Paris Orly	fr	ORY	Kefalonia	gr	EFL	1	B738	1876	-
23-Apr-22	Transavia France	Paris Orly	fr	ORY	Podgorica	me	TGD	1	B738	1493	-
23-Apr-22	Transavia France	Paris Orly	fr	ORY	Skiathos	gr	JSI	1	B738	1992	-
23-Apr-22	TUIfly Netherlands	Rotterdam	nl	RTM	Antalya	tr	AYT	2	B738	2657	XC (2)
23-Apr-22	United Airlines	Chicago O'Hare, IL	us	ORD	Zurich	ch	ZRH	7	B763	7150	LX (7)
23-Apr-22	United Airlines	Denver, CO	us	DEN	Munich	de	MUC	7	B789	8409	LH (7)

European airport passenger statistics

The following airports have revealed traffic statistics for March 2022. The percentage figure shown is traffic compared with pre-pandemic March 2019.

Austria: Innsbruck (-32%), Vienna (-48%).

Bosnia & Herzegovina: Sarajevo (+4%), Tuzla (-36%).

Bulgaria: Sofia (-31%), Varna (-14%).

Croatia: All airports (-25%), Dubrovnik (-56%), Split (-35%), Zagreb (-16%).

Cyprus: All airports (-30%), Larnaca (-43%), Paphos (+2%).

Denmark: All airports (-38%), Aalborg (-17%), Aarhus (-33%), Billund (-22%), Copenhagen (-40%).

Estonia: Tallinn (-25%)

Finland: All airports (-51%), Helsinki (-52%), Kittila (-29%), Oulu (-54%), Rovaniemi (-20%).

France: Bordeaux (-30%), Lyon (-36%), Marseille (-22%), Montpellier (-14%), Nantes (-25%), Nice (-24%), Paris BVA (+5%), Paris CDG (-35%), Paris ORY (-23%), Strasbourg (-44%), Toulouse (-35%).

Germany: Berlin (-56%), Frankfurt (-47%), Hamburg (-50%), Munich (-54%).

Greece: Athens (-28%), Chania (-2%), Corfu (+2%), Kos (-16%), Mytilene Rhodes (-10%), Santorini (-40%), Thessaloniki (-27%).

Hungary: Budapest (-32%)

Iceland: All airports (-45%), Akureyri (-8%), Reykjavik KEF (-48%), Reykjavik RKV (-1%).

Ireland: Cork (-28%), Dublin (-24%).

Latvia: Riga (-43%)

Lithuania: All airports (-33%), Kaunas (-7%), Palanga (-36%), Vilnius (-39%).

Malta: Malta (-34%)

Netherlands: Amsterdam (-34%), Eindhoven (-17%).

Norway: Haugesund (-23%)

Poland: Katowice (-26%), Poznan (-29%), Wroclaw (-45%)

Portugal: All airports (-16%), Faro (-13%), Funchal (-4%), Lisbon (-21%), Ponta Delgada (-10%), Porto (-12%).

Romania: Suceava (+78%)

Russia: St. Petersburg (-25%)

Serbia: Nis (-18%)

Slovakia: Bratislava (-58%), Kosice (-14%)

Slovenia: Ljubljana (-62%)

Spain: All airports (-22%), A Coruna (-38%), Alicante (-17%), Asturias (-22%), Barcelona (-32%), Bilbao (-33%), Fuerteventura (-6%), Gran Canaria (-19%), Granada (-41%), Ibiza (-2%), Jerez (-40%), Lanzarote (-9%), La Palma (-34%), Madrid (-28%), Malaga (-13%), Menorca (-9%), Palma de Mallorca (-16%), Santander (-29%), Santiago de Compostela (-10%), Seville (-15%), Tenerife TFN (-10%), Tenerife TFS (-10%), Valencia (-19%), Vigo (-28%).

Sweden: All airports (-47%), Gothenburg (-47%), Lulea (-37%), Malmo (-44%), Stockholm ARN (-44%), Stockholm BMA (-64%), Umea (-47%).

Switzerland: All airports (-38%), Basel (-35%), Geneva (-30%), Zurich (-46%).

Turkey: All airports (-25%), Adana (-30%), Ankara (-43%), Antalya (-25%), Bodrum (-21%), Dalaman (+12%), Istanbul IST (-20%), Istanbul SAW (-20%), Izmir (-37%), Trabzon (-32%).

UK: Aberdeen (-37%), Belfast BFD (-46%), Belfast BFS (-25%), Birmingham (-37%), Bristol (-23%), Cardiff (-62%), Doncaster Sheffield (-39%), East Midlands (-42%), Edinburgh (-39%), Glasgow GLA (-34%), Jersey (-28%), Leeds Bradford (-33%), Liverpool (-41%), London LGW (-52%), London LHR (-36%), London LTN (-38%), London STN (-29%), Manchester (-29%), Newcastle (-38%), Southampton (-71%).